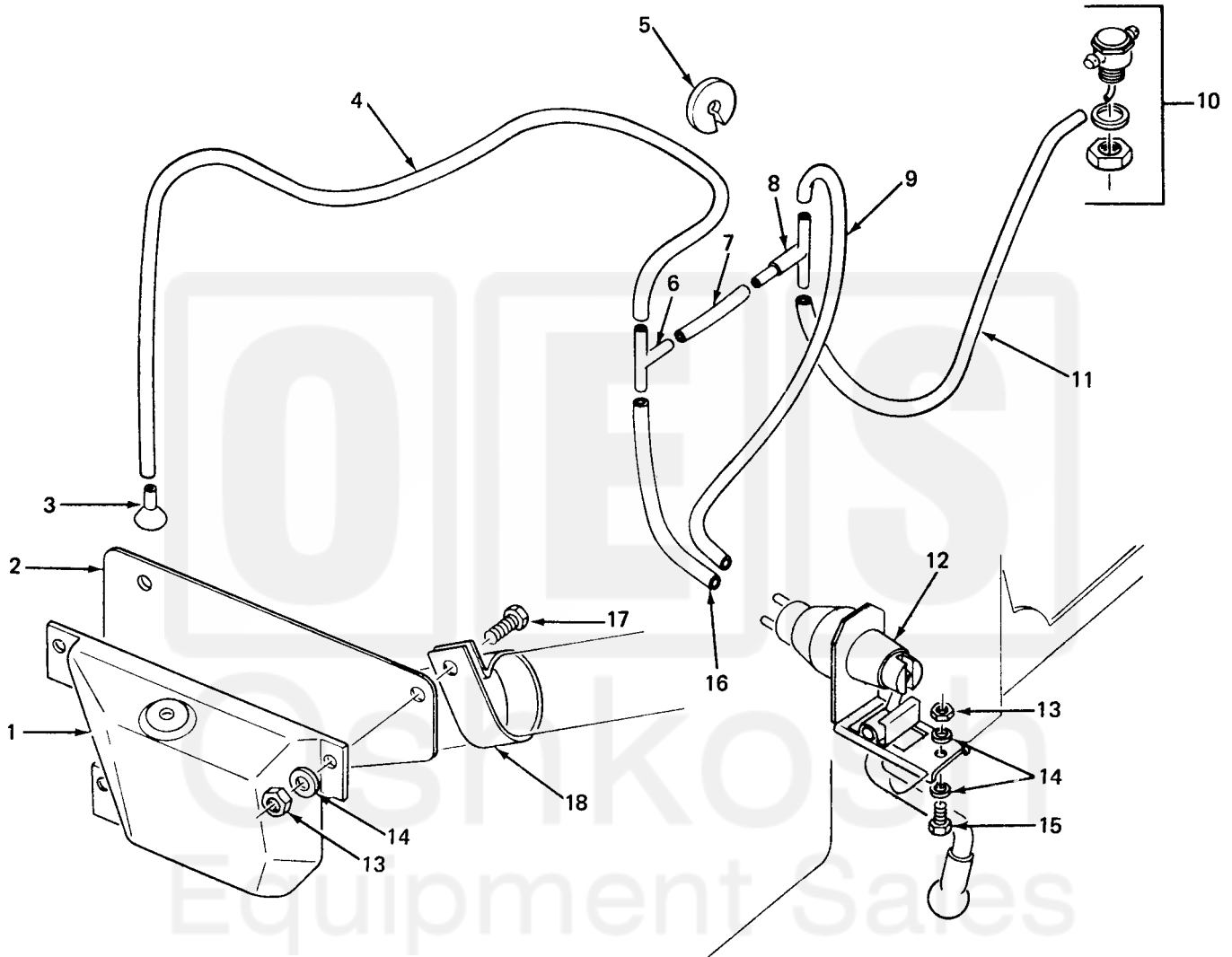


Current part is item (12) on diagram. Available at [www.oshkoshequipment.com](http://www.oshkoshequipment.com)

(1) (a) FIG. NO.	(2) (b) ITEM NO.	(3) SMR CODE	(3) NATIONAL STOCK NUMBER	(4) PART NUMBER	(5) (6) FSCM	(6) DESCRIPTION USABLE ON CODE	(7) U/M	(8) INC IN UNIT
2202-ACCESSORY ITEMS (CONT'D)								
321	10	PAOZZ	2540-00-176-9394	11640667	19207	JET, WINDSHIELD WASHER: W/2 RUBBER WASHERS AND 1 NUT AC	EA	1
321	11	MOOZZ		11644861-3	19207	HOSE, RUBBER: WINDSHIELD WASHER, 11 IN. L., .302 OD, .176 ID (MPD FROM TUBING, 4720-00-356-8351) AC	EA	1
321	12	PAOZZ	2540-00-451-3735	11640665	19207	PUMP, WINDSHIELD WASHER: MOUNTED BEHIND INSTRUMENT PANEL AC	EA	1
321	13	PAOZZ	5310-00-959-7600	MS51922-5	96906	NUT, SELF-LOCKING: PLATE TO RESERVOIR AND PUMP TO INSTRUMENT PANEL AC	EA	4
321	14	PAOZZ	5310-00-809-4058	MS27183-10	96906	WASHER, FLAT: PLATE TO RESERVOIR AND PUMP TO INSTRUMENT PANEL FLANGE AC	EA	5
321	15	PAOZZ	5305-00-068-0505	MS90726-5	96906	SCREW, CAP, HEXAGON HEAD: PUMP TO INSTRUMENT PANEL FLANGE AC	EA	1
321	16	MOOZZ		11639682-4	19207	HOSE, RUBBER: WINDSHIELD WASHER, 7 IN. L., .472 OD., .236 ID (MPD FROM TUBING, 4720-00-182-9121) AC	EA	1
321	17	PAOZZ	5305-00-267-8974	MS90726-8	96906	SCREW, CAP, HEXAGON HEAD: PLATE TO RESERVOIR AC	EA	3
321	18	PAOZZ		11676883	19207	CLAMP: RESERVOIR TO STEERING COLUMN STL, RBR COMPD AC	EA	2
322	1	PAOZZ	5305-00-019-1833	191833	21450	SCREW, ASSEMBLED WASHER: REAR VIEW MIRROR MTG	EA	4
322	2	PAOOO	2540-00-832-7336	10937793	19207	MIRROR AND BRACKET ASSEMBLY: REAR VIEW	EA	2
322	3	PAOZZ	2540-00-840-0022	MS53015-1	96906	MIRROR ASSEMBLY: REAR VIEW	EA	1
322	4	PAOZZ	5310-00-877-5796	MS21044N4	96906	NUT, PLAIN, HEXAGON	EA	1
322	5	PAOZZ	5310-00-809-4058	MS27183-10	96906	WASHER, LOCK	EA	1
322	6	PAOZZ	5310-00-732-0559	MS51968-8	96906	NUT, PLAIN, HEXAGON	EA	4
322	7	PAOZZ	5310-00-616-7998	MS35334-21	96906	WASHER, LOCK	EA	8
322	8	PAOZZ	5310-00-080-6004	MS27183-14	96906	WASHER, FLAT	EA	6
322	9	PAOZZ	5305-00-269-2807	MS90726-64	96906	SCREW, CAP, HEXAGON HEAD	EA	2
322	10	PAOZZ	2540-00-832-7337	10937430	19207	ARM, REAR VIEW MIRROR	EA	1
322	11	PAOZZ	2540-00-832-7338	11601475	19207	ARM, REAR VIEW MIRROR	EA	1
322	12	PAOZZ	5330-00-483-2408	7372705	19207	GASKET: MIRROR ARM MTG	EA	4
322	13	PAOZZ	5340-00-774-1403	7741403	19207	CLAMP, LOOP: MIRROR ARM MTG	EA	2
322	14	PAOZZ	2540-00-878-3490	10937757	19207	BRACKET: REAR VIEW MIRROR MTG	EA	1



Current part is item (12) on diagram. Available at [www.oshkoshequipment.com](http://www.oshkoshequipment.com)



TA 031426

Figure 321. Windshield washer.